

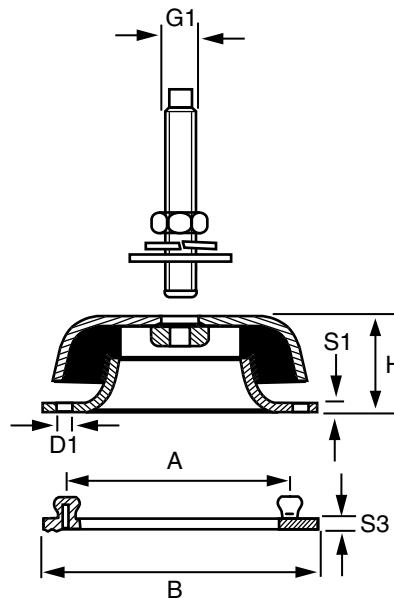
LEVELLING ISOLATOR

This range of isolators offer increased protection to the rubber in applications where this is considered necessary as well as the metal components being galvanised to protect against corrosion. They are also available with a leveling spindle to allow effortless level adjustment so that the height of machines can be set precisely. The Isolators can be used without being anchored to the floor by the use of the rubber underlay which is resistant to oil. It is suggested that before mounting the underlay that the studs are moistened with soapy water.

The isolators provide excellent isolation efficiency with equal load capacity in both compression and shear. They are suitable for applications where restraint in the horizontal position is required but good isolation is needed in the vertical plane.

The isolators are available in three sizes and three elastomer hardnesses ; 40 duro, 55 duro, 65 duro , while providing load capacity from 50kg to 2,000kg.

Typical Mount with leveling spindle and underlay.



DIMENSIONS

| Part No. | DOME MOUNT | | | | | | Leveling SPINDLE | |
|-----------|------------|-----|----|----|----|-----|------------------|-----|
| | B | A | D1 | S1 | H | G | Part No. | G1 |
| M51058540 | 108 | 88 | 9 | 3 | 40 | M12 | M510LS1 | M12 |
| M51033629 | 168 | 132 | 13 | 4 | 50 | M16 | M510LS2 | M16 |
| M51058541 | 200 | 165 | 13 | 6 | 70 | M20 | M510LS3 | M20 |

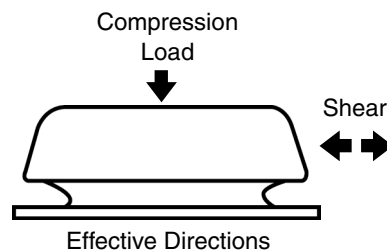
| UNDERLAY | | | MOUNT WEIGHT | |
|----------|-----------|-----|--------------|-----------|
| Part No. | WEIGHT Kg | S3 | Part No. | WEIGHT Kg |
| M510UL1 | 0.01 | 2.5 | M51058540 | 0.7 |
| M510UL2 | 0.03 | 3 | M51033629 | 1.7 |
| M510UL3 | 0.11 | 4 | M51058541 | 4.3 |

All properties nominal, contact Mackay for Technical advice

All Dimensions in Millimetres

© Mackay Consolidated Industries Pty Ltd 2015
www.mackayrubber.com.au

| LOAD Kg | 40 Duro Deflection mm | 55 Duro Deflection mm | 65 Duro Deflection mm |
|------------------|-----------------------------|-----------------------------|-----------------------------|
| M51058540 | | | |
| 50 | 1.11 | 0.65 | 0.45 |
| 100 | 2.06 | 1.21 | 0.85 |
| 150 | 3.02 | 1.67 | 1.21 |
| 200 | 3.82 | 2.31 | 1.58 |
| 250 | - | 2.81 | 1.90 |
| 300 | - | 3.27 | 2.32 |
| 350 | - | 3.70 | 2.66 |
| 400 | - | - | 2.98 |
| 450 | - | - | 3.28 |
| 500 | - | - | 3.57 |
| M51033629 | | | |
| 100 | 1.13 | 0.63 | 0.42 |
| 200 | 2.20 | 1.23 | 0.84 |
| 300 | 3.23 | 1.82 | 1.24 |
| 400 | 4.22 | 2.40 | 1.64 |
| 500 | - | 2.97 | 2.00 |
| 600 | - | 3.53 | 2.42 |
| 700 | - | 4.07 | 2.80 |
| 800 | - | - | 3.17 |
| 900 | - | - | 3.54 |
| 1000 | - | - | 3.90 |
| M51058541 | | | |
| 200 | 1.67 | 0.93 | 0.63 |
| 400 | 3.24 | 1.82 | 1.25 |
| 600 | 4.50 | 2.73 | 1.83 |
| 800 | 5.56 | 3.51 | 2.46 |
| 1000 | - | 4.20 | 3.02 |
| 1200 | - | 5.24 | 3.65 |
| 1400 | - | - | 4.22 |
| 1600 | - | - | 4.75 |
| 1800 | - | - | 5.27 |
| 2000 | - | - | 5.75 |



All properties nominal, contact Mackay for Technical advice

All Dimensions in Millimetres